

folex[®]

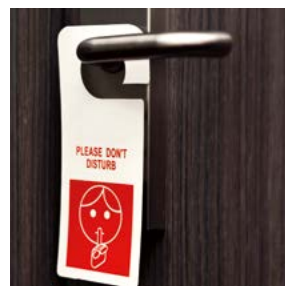
LONGLIFE PRO MATT WO

Product line for digital printing



the fine art of coating

DIGITAL
PRINTING



«NEW IMPROVED GENERATION»

Extreme Performance



STRONG + TOUGH

The base film is made of Polyethylene Terephthalate or PET for short and is most commonly known as polyester. The film is very tough offering excellent properties like stiffness, tear free, non-rip construction and with very good dimensional stability. It's available in thickness grades from 90, 115, 140, 190, 265 to 350 micron. PET is much tougher and stronger than alternative films like PP and PVC. It's actually much stronger and more tear resistant than comparable thicker alternatives. In the manufacturing process we also further heat stabilise the base film to ensure shrinkage is reduced even greater, to standard film specifications, ensuring registration and the sheet, format remains accurate. Unlike papers there is no grain direction with this product.



COATING

The special high white, top coating layer offers a very tough, scuff and scratch resistant surface. This top coating offers strong toner bonding. So the image remains fixed to the film and with a good consistent transfer of all text and images, which then finally provides vibrant and brilliant image quality. The anti-static surface within the coating ensures excellent runnability feeding, output and then collating after printing. One of the key issues with toner technology and synthetic films is static and the coating provides perfect, static free performance.



WATERPROOF

It is waterproof, grease, alcohol and chemical resistant which means you can print directly onto the film without the need for extra finishing steps to over varnish or laminate and it therefore offers a very strong tough alternative to paper.



OUTDOOR USE

Material is ideal for wet and dirty conditions including the great outdoors. Material can be simply wiped clean or even immersed fully in water. Temperature usage range is typically from -40 °C up to +120 °C with the films melting point in the region of +250 °C.



TOY SAFETY + FOOD

Approved for Toy Safety EN-71, part 3, which is the safe use of products regarding migration of heavy metals and Phthalates. Although there is no direct food contact approval the product is frequently used for non direct contact labels, signage, tags in food counter areas, such as delicatessen, meats, cheeses etc. The product is REACH certified.



RECYCLING

The film is polyester with a special surface coating and as such can be recycled as category 7 plastics for disposal. It can also be incinerated to create energy and will not emit toxic or VOC chemicals. All recycling methods must be carried out by authorised authorities and based on the local rules and regulations for waste disposal. PET is also PVC free so from an environmental perspective it's a much better option than alternative films such as PVC.

TYPICAL APPLICATIONS

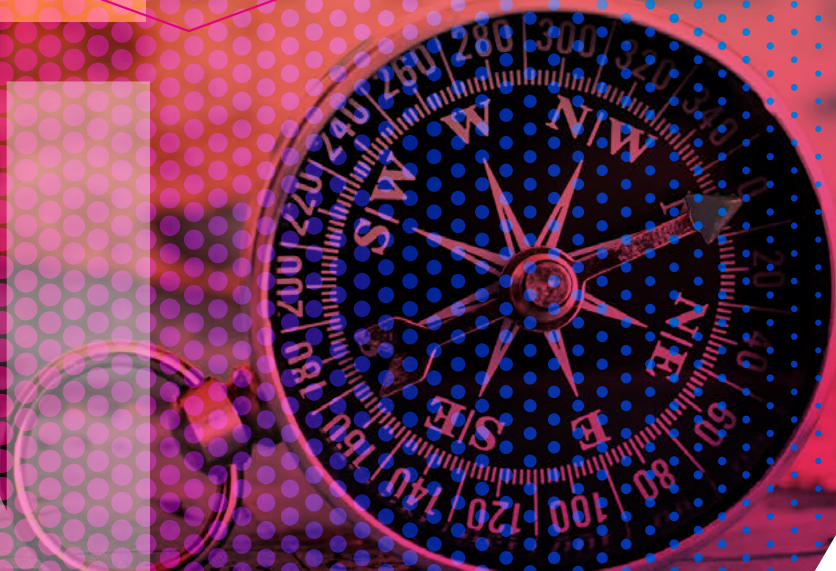
Archived documents	Flash cards	Plant labels, tags and stakes
Bike Race signs	Flexible Rulers	Pocket Guides
Bookmarks	Flight Charts	POP and POS Retail displays
Business cards	Food non-direct contact areas	Recipe Cards
Cable Tags	Guides	Safety Sheets
Calendars	Hospitals and clinics	Separation sheets
Catalogues	ID cards	Shelf edge labels
Certificates	Industrial tags	Shelf Sliders
Chemical Drum Tags	Loyalty cards	Shelf Talkers and Wobbler's
Clean room documents	Luggage Tags	Signage
Coasters	Maps for hiking	Sports running bibs
Deli Prices	Medical charts and cards	Tab sheets
Diving Cards	Membership Cards	Table Tents
Door hangers	Menus	Tags
Event passes	Operating and service manuals	Technical manuals
External signage	Pharma Manuals	Workshop manuals
Fishing and Hunting guides	Place-mats	



EXPLORE YOUR ROUTE

... and focus on your design. Expect best results and vibrant colors on our Longlife Pro: Digital printing foils for challenging tasks.

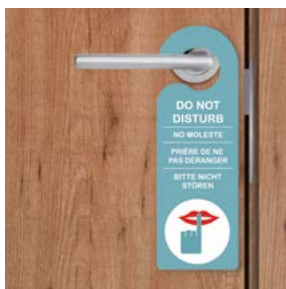
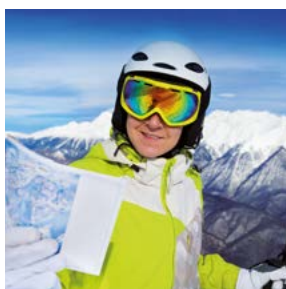
- » tear resistant
- » splash resistant
- » heat resistant



DIGITAL PRINTING


LOGLIFE PRO MATT WO

- Universal toner dedicated surface coating for presses, printers and copiers
- Attractive high white point, non-reflective matt layer
- Printable both sides so ideal for simplex or duplex printing
- Superb anti-static properties for great, trouble free runnability
- Super strong toner adhesion, ensures images stay in place
- Waterproof and resistant to chemicals, grease and soap, so can be used for challenging applications
- Great for indoor and outdoor applications and temperatures from -40 °C to +250 °C
- Tear resistant, tough, dust free, great for where paper simply just isn't up to the job
- Wipe clean, durable alternative to paper so it can be used again and again
- Eliminates the need to laminate or varnish, reducing finishing time and costs
- Polyester PET film is a PVC free alternative, so a better choice for our planet
- Excellent flatness and dimensional stability so looks as it should
- Can be die cut, punched, scored and perforated so many finishing options are possible
- EN 71 part 3 Toy Safety certified so contains no harmful chlorine, halogens or CFCs
- Class 7 recycling so approved for energy sources with incineration or landfill



PREMIUM TEAR PROOF FILM

Matt white film provides brilliant, vibrant images onto tear free polyester which does not require lamination. The imaged film has outstanding toner bonding and good water resistance. Ideal for long life, archival applications and as a universal colour toner film. It has the same printable coating on both sides and is available in a variety of different thicknesses. To produce durable manuals, outdoor signs, point of sale, point of purchase, charts, maps, signage, menu cards etc. Ultimate performance for high speed printers, copiers and digital presses. We recommend testing for printer suitability with 0.265 mm and 0.350 mm.

■ Longlife Pro Matt WO				
White, matt	0.090 mm	100	210 mm x 297 mm	29738.090.44000
Polyester	0.090 mm	500	210 mm x 297 mm	29738.090.44800
	0.090 mm	50	297 mm x 420 mm	29738.090.43100
	0.090 mm	200	320 mm x 450 mm	29738.090.84500
	0.115 mm	100	210 mm x 297 mm	29738.115.44000
	0.115 mm	500	210 mm x 297 mm	29738.115.44800
	0.115 mm	50	297 mm x 420 mm	29738.115.43100
	0.115 mm	200	320 mm x 450 mm	29738.115.84500
	0.140 mm	100	210 mm x 297 mm	29738.140.44000
	0.140 mm	500	210 mm x 297 mm	29738.140.44800
	0.140 mm	50	297 mm x 420 mm	29738.140.43100
	0.140 mm	200	320 mm x 450 mm	29738.140.84500
	0.190 mm	100	210 mm x 297 mm	29738.190.44000
	0.190 mm	500	210 mm x 297 mm	29738.190.44800
	0.190 mm	50	297 mm x 420 mm	29738.190.43100
	0.190 mm	200	320 mm x 450 mm	29738.190.84500
	0.265 mm	50	210 mm x 297 mm	29738.265.44100
	0.265 mm	500	210 mm x 297 mm	29738.265.44800
	0.265 mm	50	297 mm x 420 mm	29738.265.43100
	0.265 mm	200	320 mm x 450 mm	29738.265.84500
	0.350 mm	50	210 mm x 297 mm	29738.350.44100
	0.350 mm	250	210 mm x 297 mm	29738.350.44700
	0.350 mm	50	297 mm x 420 mm	29738.350.43100
	0.350 mm	100	320 mm x 450 mm	29738.350.84400



CHEF'S PROMISE

...food and drink splashes are inevitable. People can be messy eaters, nobody is judging. Avoid the relentless need to continuously replace restaurant collateral with our easy-to-maintain range.

- » stain-resistant
- » cleanable
- » replaceable sheets



folex[®]

Folex AG
Bahnhofstrasse 92
6423 Seewen SZ
Switzerland
phone +41 41 819 39 39
fax +41 41 810 01 35
int.sales@folex.ch
www.folex.com

Folex Limited
Cranmore Place
Cranmore Boulevard
Solihull
West Midlands B90 4RZ
Great Britain
phone +44 121 733 3833
fax +44 121 733 3222
sales@folex.co.uk
www.folex.co.uk

Folex Coating GmbH
Unnauer Weg 6c
50767 Köln
Germany
phone +49 221 97 94 79 0
fax +49 221 97 94 79 9
info@folex.de
www.folex.de

Regulus GmbH
Paul-Gossen-Str. 114
91052 Erlangen
Germany
phone +49 9131 3002 0
fax +49 9131 1349 9
info@regulus.de
www.folex.com